

BERNINA⁺

Boo Boo Bunny

Created by Bunny Gates

This is a great little project for any kid. A cute little icepack that holds a few ice cubes—just the thing for healing boo-boos!

Supplies

- ETO Signature Design Pack Minkee Pals #11936, including the directions from the pack
- Terry cloth (such as a washcloth)
- OESD PolyMesh Cut-Away Stabilizer
- OESD AquaFilm Topping or Backing
- 101 Quilt Basting Spray
- Isacord Polyester thread



Making the File in Explorations

Open a new project and name it BooBoo Bunny.

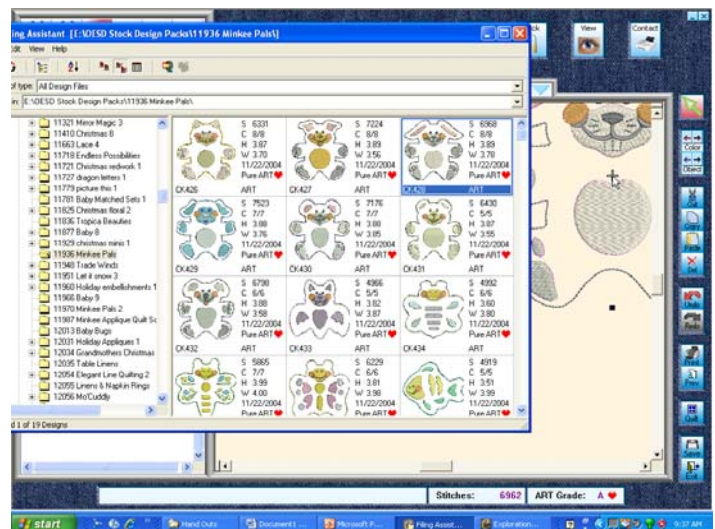
Go to Designs Mode.

If you're using the designs from a CD:

- Click on Designs Mode.
- Click on CD-ROM at the bottom of the design folders.
- Select the Bunny #CK428; drag and drop onto the workspace.

If you've placed the designs on your hard drive:

- Click on Tools > Filing Assistant.
- Find the design pack on the left side of the window. Click on it; you will see the designs in the pack on the right side of the window.
- Select the Bunny #CK428; drag and drop onto the workspace.



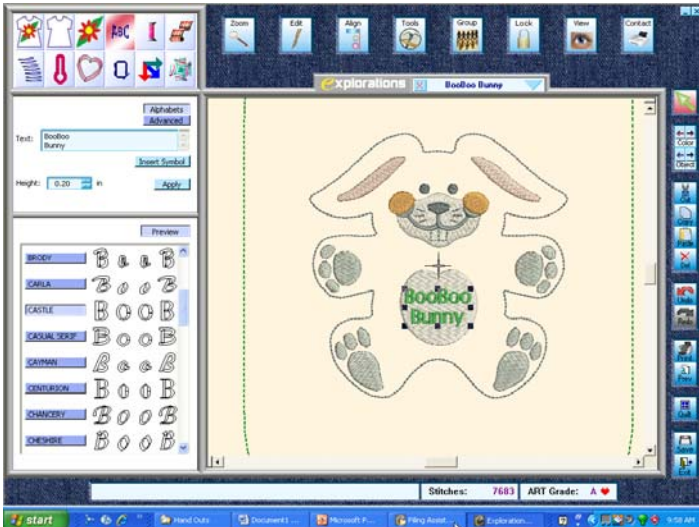
Close or minimize the Filing Assistant.

Go to Hoops Mode. Select the hoop you will be using (example: artista 255 x 145 Oval).

Click View and make sure that there is a check mark next to Show Hoops.

Using one of the solid corner sizing handles, enlarge to 140% or 5.29 x 5.45. This is a good size ice pack for a little one.

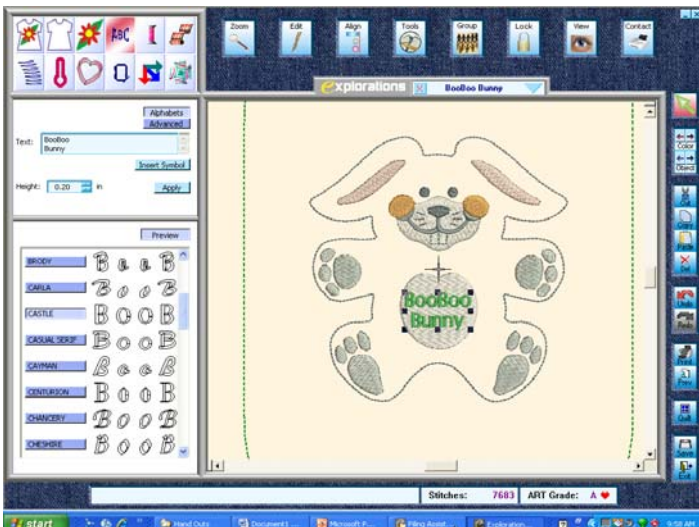
Go to Lettering Mode. Click on the Preview Button. Make sure that the bunny is not selected. Click on the Castle alphabet. Type into the text box: BooBoo, enter, Bunny. Change the height to 0.20; click on Apply.



Note: You can preview the different alphabets to see if you would like to use a different one. Make sure the letters are selected and click on the names of the alphabets in the Preview Box to the left of the workspace. You can also play with the size of the letters by dragging one of the solid corner handles.

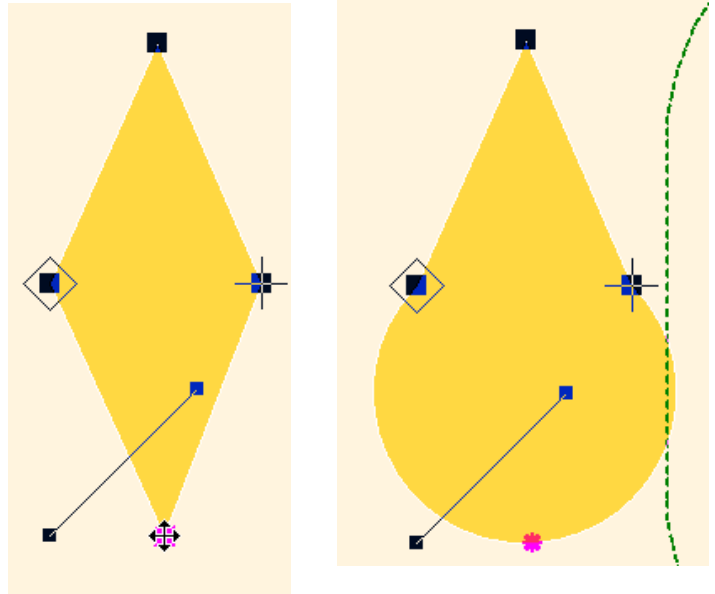
With Classic & Reshape Option or Galaxy Explorations you can add tear drops to the bunny.

Go to Cookie Cutter Mode. Open the New Shapes folder, select the diamond, then drag and drop it onto the workspace.



Click on Zoom; Zoom Out 2x.

Click on Edit > Reshape. Select the bottom solid square, then click on the space bar on your keyboard to change the square to a circle.



Click the Esc key on your keyboard to exit Reshape.

Go to Effects Mode > Stitches. In the Fills box, select Satin. Using one of the solid corner handles, change the size to 0.25. Drag the tear drop close to the bunny. Zoom in so that you can place and size the teardrop to go with the bunny.



Place the teardrop under one of the bunny's eyes and resize it if needed.



With the teardrop selected, click on Copy > Paste. Move the pasted teardrop under the other eye.

Note: Add as many tear drops as desired by repeating the steps above.

Click on the Save button.



Constructing the Bunny on the Embroidery Machine Hoop a piece of PolyMesh Cut-Away. Spray the back of a square of terry fabric with 1010 Quilt Basting Spray. Place the terry right side up on the hooped PolyMesh. Hoop.

Lightly spray a piece of AquaFilm with 101 Quilt Basting Spray and place on top of the hooped terry.

Embroider the front of the bunny.



Embroider the last color—the seam line—watching carefully to make sure the presser foot doesn't get caught in the tucks.

Remove from the embroidery machine. Remove bunny from the hoop and trim the excess fabric from the outside of the seam line.

For the back of the bunny you need two pieces of terry with a selvage edge on each piece. Overlap the selvage edges; this forms the closure on the back of the bunny. Place the overlapped pieces on top of the bunny.



Pin a little tuck into each piece to provide enough room for an ice cube to fit between the layers.



Turn right side out and fill with ice cubes.

