

# BERNINA<sup>+</sup>

BERNINA 830

## Stitch Embellished Pillows

Created by Pia Welsch

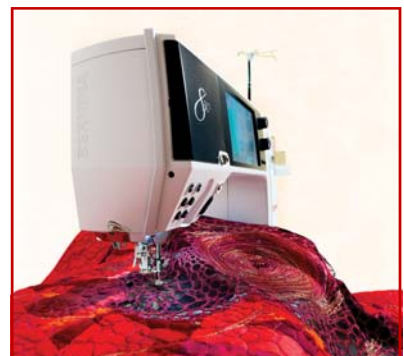


These decorative pillows were created using the **BERNINA 830 Sewing Machine** along with a bit of ingenuity!

Directions for the Square Tassel Pillow are presented on the following pages.

Try these techniques on almost any type of project including jackets, table linens and quilts.

The results are elegant yet fun to make!



Experience it. Now!  
**BERNINA 830**

[www.bernina.com/830](http://www.bernina.com/830)

## Stitch Embellished Square Tassel Pillow (A)

### Supplies

#### Fabrics

- Pillow Top Fabric
  - \* 1 strip red silk, 3 x 16 inches
  - \* 1 strip blue silk, 2 x 16 inches
  - \* 1 strip orange linen, 3 x 16 inches
  - \* 1 strip orange linen, 10 x 16 inches
- Pillow Back Fabric
  - \* 1 strip orange linen, 16 x 16 inches

#### Machine & Accessories

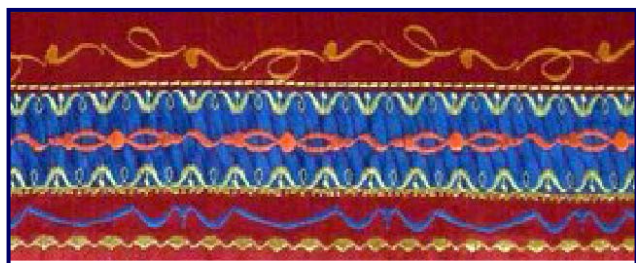
- BERNINA 830
- Clear Foot #34
- Braiding Foot #21
- Free Motion Couching Foot #43

#### Notions

- Mettler Poly Sheen Embroidery Thread:
  - \* 3406/1102 Pumpkin
  - \* 3406/0700 Bright Yellow
  - \* 3406/1306 Devil Red
  - \* 3406/4531 Caribbean
  - \* 7633/0490 Gold Metallic
- Mettler Silk Finish Cotton Thread for couching & finishing. Color to Match cord.
- Variegated Cord
- Armo Weft Fusible Interfacing, 1/2 yard
- 16" Square Pillow Form
- 4 Decorative Tassels

### Decorative Stitching

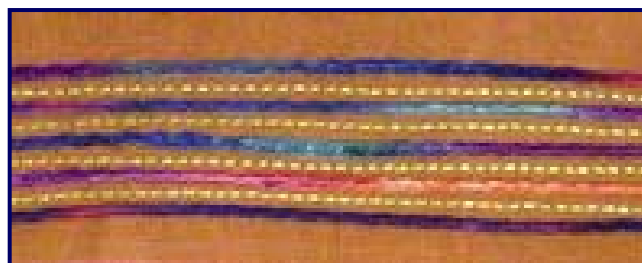
#### Stitch Embroidered Inset



- Iron fusible interfacing to the wrong side of all pillow top fabric strips.
- Cut the red silk strip in half lengthwise. Stitch each of the halves to the opposite lengthwise edges of the blue silk strip, using a 1/4 " seam allowance. Press the seams open.
- Now it's time to play! The following stitch combinations were used on the sample, but the ultimate design is up to you. Stitch using Clear Foot #34. *Always start stitching in the center and work your way out to the edges.*
- 1<sup>st</sup> Row: 1 x stitch 501 mirrored left/right and up/down + 1 x stitch 448 mirrored up/down + 1 x stitch 501 mirrored up/down + 1 x stitch 448 mirrored left/right and up/down. Thread: 3406/1102 Pumpkin
- 2<sup>nd</sup> Row: stitch 713. Thread: 7633/0490 Gold Metallic.

- 3<sup>rd</sup> Row: stitch 641 mirrored left/right. Thread: 3406/0700 Bright Yellow
- 4<sup>th</sup> Row: 1 x stitch 414 + 1 x stitch 438 mirrored up/down + 1 x stitch 407 stitch length: 0.25 + 1 x stitch 438. Thread: 3406/1306 Devil Red
- 5<sup>th</sup> Row: stitch 641. Thread: 3406/0700 Bright Yellow
- 6<sup>th</sup> Row: stitch 419 stitch width: 3.5. Thread: 7633/0490 Gold Metallic
- 7<sup>th</sup> Row: stitch 436 x 2 extended + 1 x stitch 428 + 1 x stitch 427 + 1 x stitch 428. Thread: 3406/4531 Caribbean
- 8<sup>th</sup> Row: stitch 444 mirrored left/right, stitch width 6.0. Thread: 7633/0490 Gold Metallic

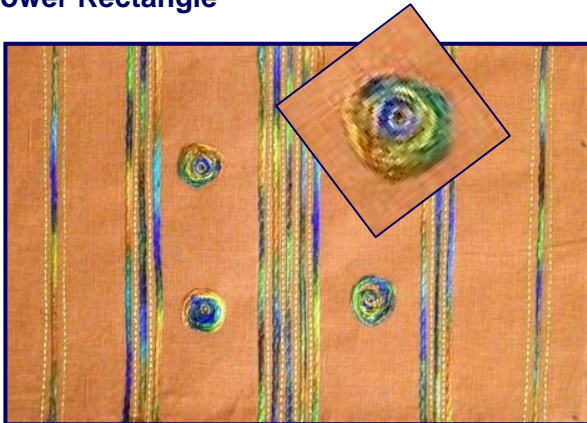
#### Top Border



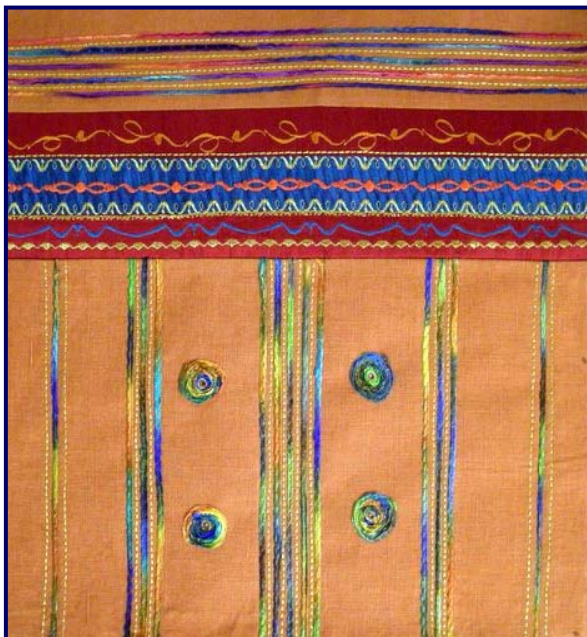
- Embellish this strip by couching variegated cord lengthwise using Braiding Foot #21.
- Between the couched cords, embellish with stitch 713 in thread 0490 Gold Metallic using Clear Foot #34.

## Decorative Stitching - continued

### Lower Rectangle



- Using the Braiding Foot #21, embellish the lower rectangle by couching variegated cord in five width-wise groupings of 1/3/5/3/1. *Always start stitching in the center and work your way out to the edges.*
- Between the couched cords, embellish with stitch 713 in thread 7633/0490 Gold Metallic using Clear Foot #34.
- Create four circle motifs by couching cording in a free-motion technique using Free-motion Couching Foot #43. Fill in the circle center with free-motion stitching in thread 7633/0490 Gold Metallic. Complete the center with small glue-on rhinestones.



- Stitch the *Top Border* and *Lower Rectangle* to opposite lengthwise edges of the *Stitch Embroidered Inset* using a 1/4" seam allowance.

## Pillow Construction

- Machine baste a decorative tassel in each pillow corner.
- For quick and easy finishing, place the pillow front and back pieces right-sides together. Stitch around the pillow using a 1/4" seam allowance, leaving an opening in the lower edge for pillow form insertion.
- Press seams open before turning right-sides out. Trim corner seam allowances.
- Insert pillow form and close the opening by machine or hand. Enjoy!
- Create a variety of colorful pillows by varying the pillow size, shape and decorative stitch embellishments. The possibilities are endless!

### **BERNINA FEETures Volumes 1-3**



*BERNINA Features* are information-packed guides to Presser Feet, Accessories and Attachments. These spiral-bound educational reference books chronicle each foot with in-depth information, including *Foot Facts*, step-by-step *Tested Sewing Techniques* and a *Cross Check* of related feet/accessories.

These publications are available through your local BERNINA Dealer.

**For additional 8-Series projects...  
Visit [www.berninausa.com](http://www.berninausa.com) today!**